



GMT MONTHLY MEMBERSHIP PROGRESS REPORT

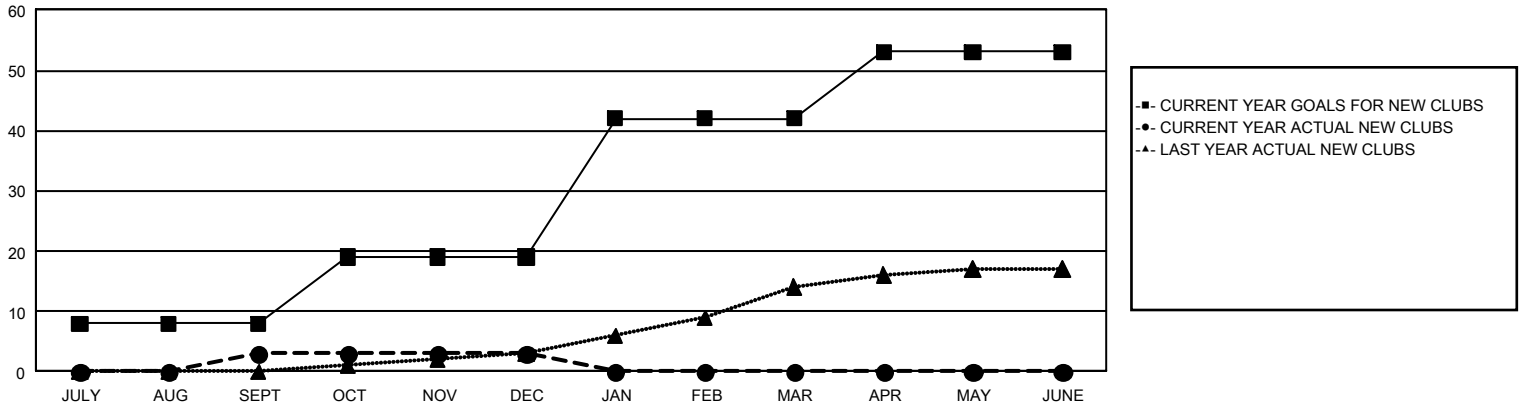
GAT Constitutional Area 5 - Japan

Results as of: 12/31/2023

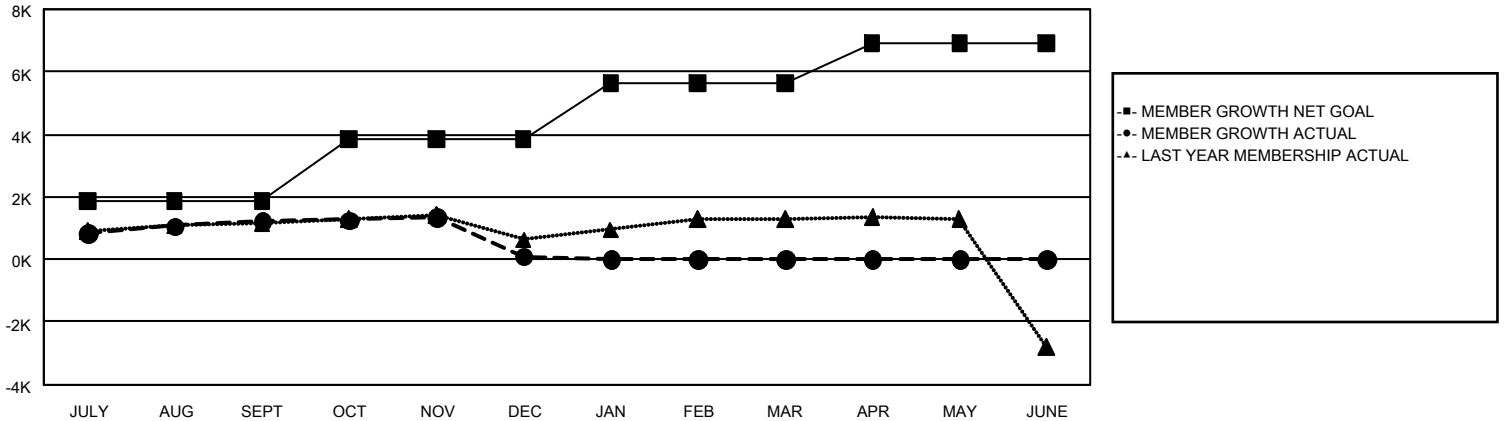
REPORT DOES NOT INCLUDE CLUBS IN UNDISTRICTED AREAS.

Clubs				Members			
RESULTS FOR 2023-2024				RESULTS FOR 2023-2024			
QUARTER	NEW CLUB GOAL	NEW CLUBS	DROPPED CLUBS	QUARTER	MEMBER GROWTH NET GOAL	MEMBER GROWTH ACTUAL	DROPPED MEMBERS ACTUAL (including transfers)
JULY/AUG/SEPT	8	3	3	JULY/AUG/SEPT	1,850	2,926	1,552
OCT/NOV/DEC	11	0	9	OCT/NOV/DEC	1,994	1,269	2,333
JAN/FEB/MAR	23	0	0	JAN/FEB/MAR	1,787	0	0
APR/MAY/JUNE	11	0	0	APR/MAY/JUNE	1,271	0	0

GOALS AND ACTUAL NEW CLUBS CUMULATIVE



GOALS AND ACTUAL MEMBERS CUMULATIVE



DROPPED CLUBS: 12

1,550 CLUBS OF 2,760 ADDED 1 OR MORE NEW MEMBERS

GENDER DISTRIBUTION

MALE 74,187 (76.87%)
FEMALE 22,312 (23.12%)

DROPPED MEMBERS

DECEASED	383
CLUB CANCELLED	4
OTHER	3,498
TOTAL	3,885

[CLICK HERE FOR CUMULATIVE MEMBERSHIP DATA](#)

TOTAL FAMILY UNIT MEMBERS	30,387
FAMILY MEMBERS PAYING HALF DUES	16,803